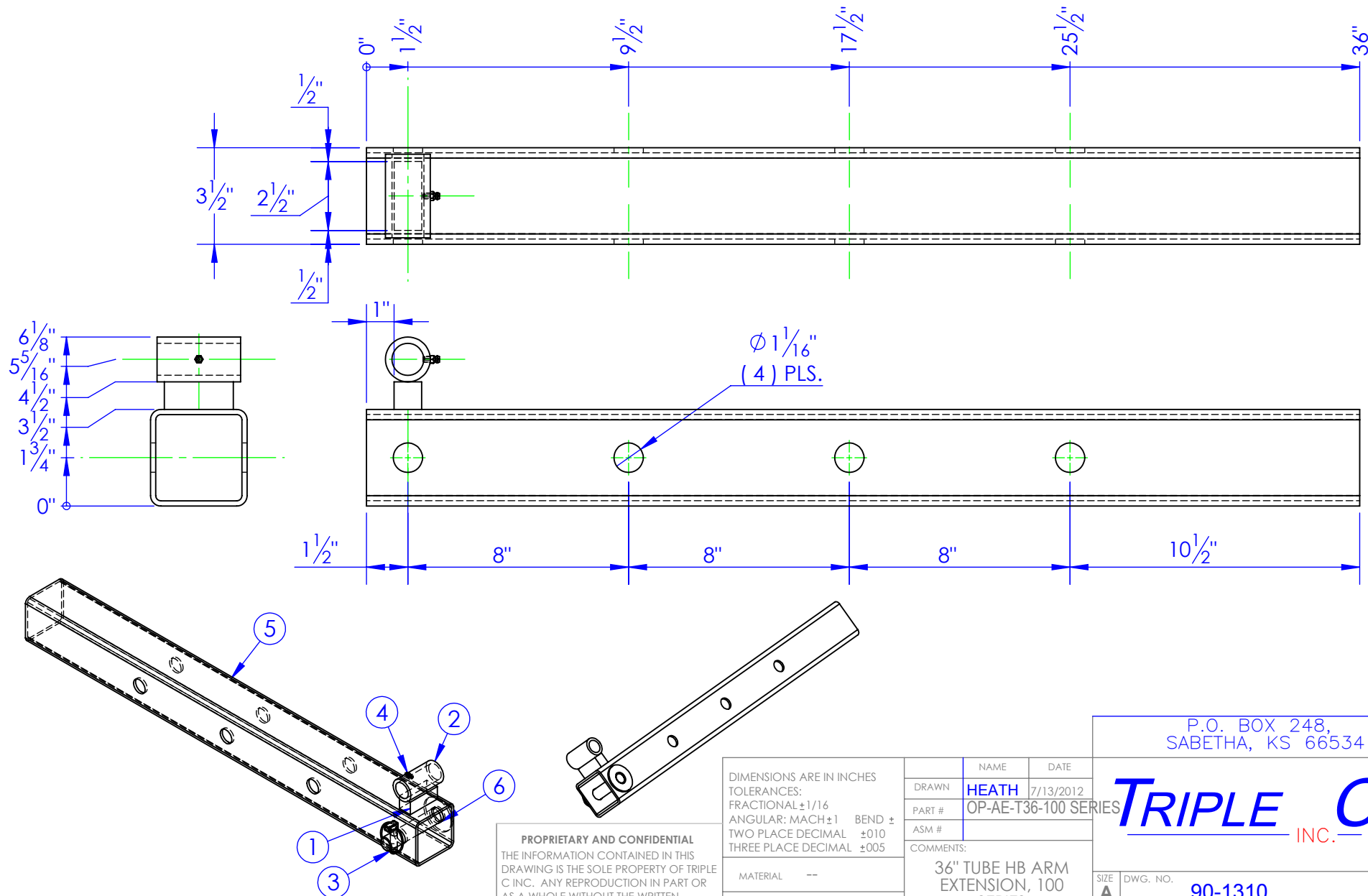


ITEM NO.	PART NUMBER	DESCRIPTION	MATERIAL	DRAWING #	QTY.
1	FI 1x1 L 2.5	LENGTH: 2-1/2"	FI 1x1	STOCK	1
2	FP-SB00-100	00 SPINNER BUSHING	MT 1.625x1.125	10-2500	1
3	HD-PL .4375 HD	7/16 Lynch Pin.		STOCK	1
4	HD-ZG .25-28 STR	GREASE ZERK 1/4-28 STRAIGHT	STOCK	STOCK	1
5	ST-3.5x3.5x.1875 L 36	LENGTH: 36"	ST-3-1/2 x 3/16"	STOCK	1
6	RE-PN-C1x475	PIN, CON, 4-7/8"		10-1707	1

REVISIONS			
REV.	DESCRIPTION	DATE	APPROVED
A	INITIAL RELEASE	3/28/2012	



PROPRIETARY AND CONFIDENTIAL
 THE INFORMATION CONTAINED IN THIS
 DRAWING IS THE SOLE PROPERTY OF TRIPLE
 C INC. ANY REPRODUCTION IN PART OR
 AS A WHOLE WITHOUT THE WRITTEN
 PERMISSION OF TRIPLE C INC. IS PROHIBITED.

DIMENSIONS ARE IN INCHES TOLERANCES: FRACTIONAL $\pm 1/16$ ANGULAR: MACH ± 1 BEND \pm TWO PLACE DECIMAL ± 010 THREE PLACE DECIMAL ± 005	
MATERIAL	--
DO NOT SCALE DRAWING	

NAME	DATE
DRAWN HEATH	7/13/2012
PART #	OP-AE-T36-100 SERIES
ASM #	
COMMENTS: 36" TUBE HB ARM EXTENSION, 100 SERIES	

P.O. BOX 248, SABETHA, KS 66534			
TRIPLE C INC.			
SIZE A	DWG. NO. 90-1310	REV. A	
SCALE: 1:5	WEIGHT: 26.86	SHEET 1 OF 1	